

Choroidal effusion in posterior scleritis

Category(ies): Retina, Vitreous

Contributor: [Jesse Vislisel, MD](#)

Photographer: Brice Critser, CRA



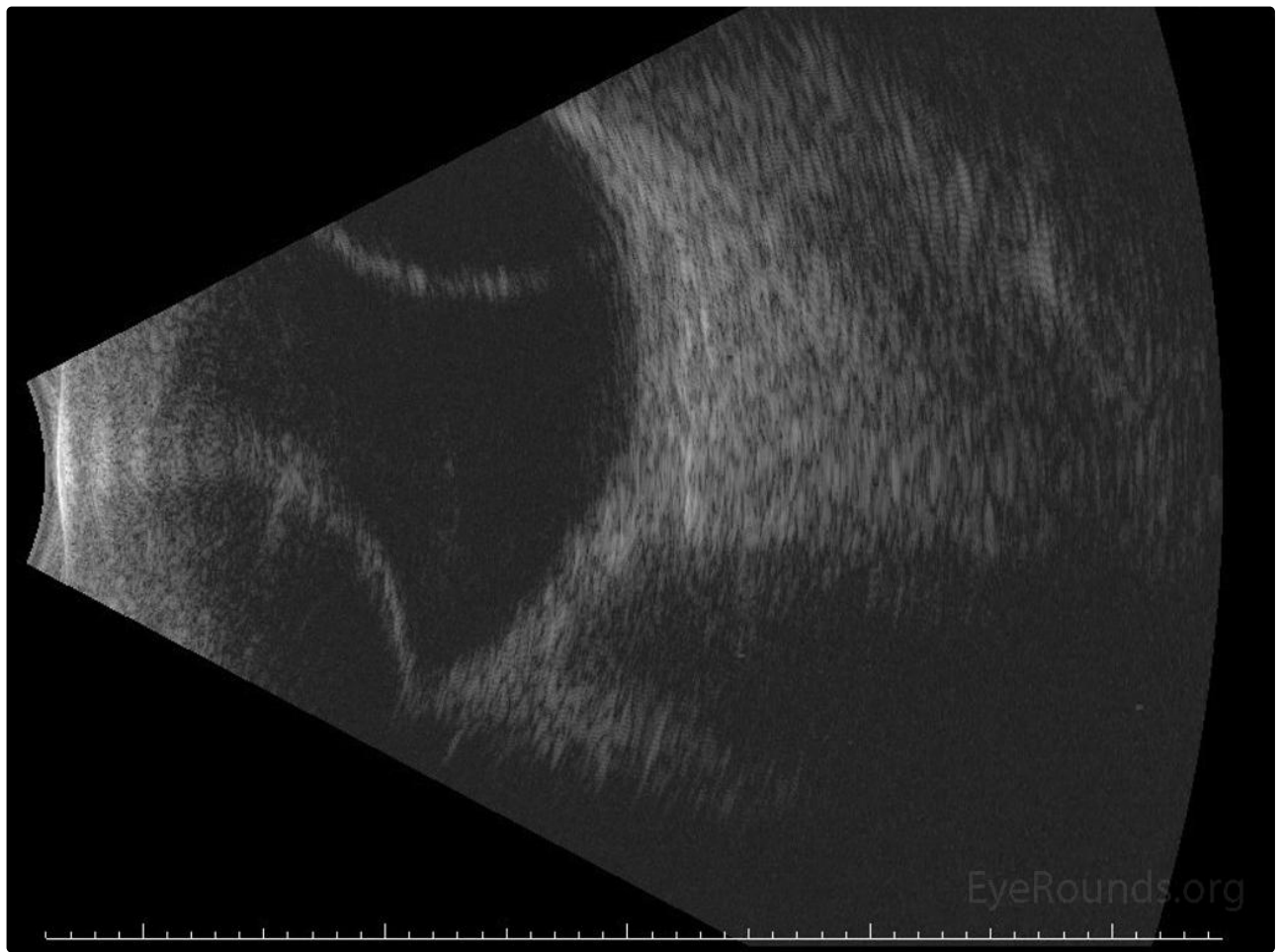
Choroidal effusions, also known as serous choroidal detachments, represent an accumulation of fluid in the suprachoroidal space. This image shows the presence of choroidal effusions in the setting of posterior scleritis. Also pictured are the appearance of the choroidal effusions on B-scan ultrasonography and an MRI that was obtained for other reasons.



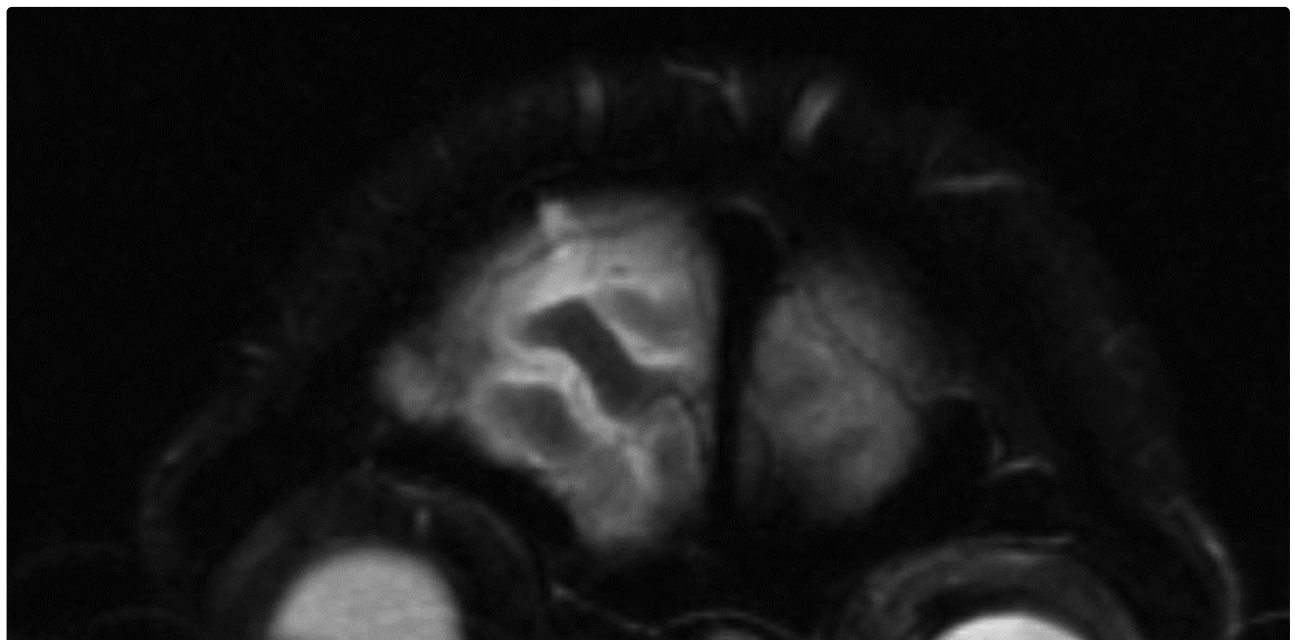
EyeRounds.org

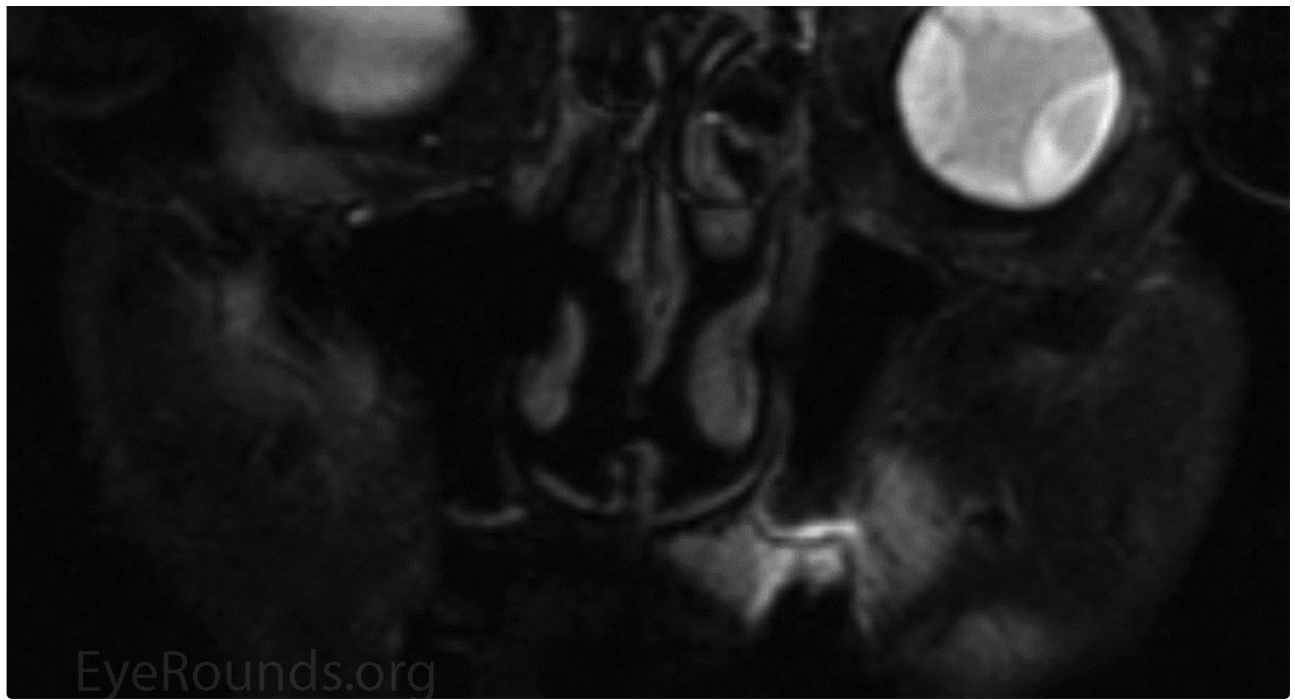
[Enlarge](#)

[Download](#)



[Enlarge](#) [Download](#)





 [Enlarge](#)

 [Download](#)

Image Permissions:



Ophthalmic Atlas Images by [EyeRounds.org](#), [The University of Iowa](#) are licensed under a [Creative Commons Attribution-NonCommercial-NoDerivs 3.0 Unported License](#).

Address

University of Iowa
Roy J. and Lucille A. Carver College
of Medicine
Department of Ophthalmology and
Visual Sciences
200 Hawkins Drive
Iowa City, IA 52242

[Support Us](#)

Legal

Copyright © 2019 The University of
Iowa. All Rights Reserved
[Report an issue with this page](#)
[Web Privacy Policy](#) |
[Nondiscrimination Statement](#)

Related Links

[Cataract Surgery for Greenhorns](#)
[EyeTransillumination](#)
[Gonioscopy.org](#)
[Iowa Glaucoma Curriculum](#)
[Iowa Wet Lab](#)
[Patient Information](#)
[Stone Rounds](#)
[The Best Hits Bookshelf](#)

EyeRounds Social Media

Follow



Receive notification of new cases,
[sign up here](#)
[Contact Us](#)
[Submit a Suggestion](#)